

### Auto & Modified & Manual Reset



#### SPECIFICATIONS

**Single Pole Thermal Type Breakers**

**Rating :** 5~30A ; 24 VDC.

**Interrupt Rating :** 100A@24VDC(5A~10A version);  
150A@24VDC(15A version); 200A@24VDC(20A version);  
300A@24VDC(25A~30A version).

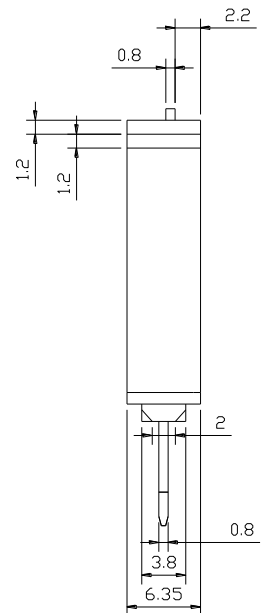
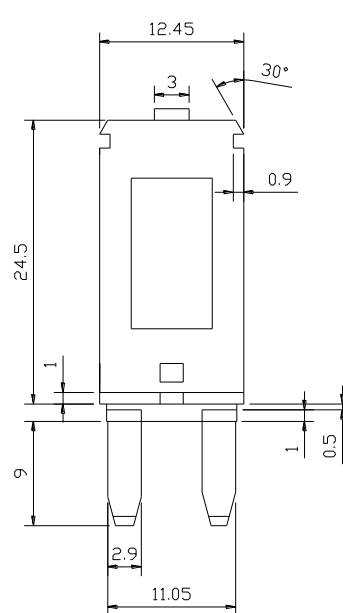
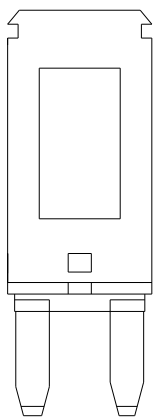
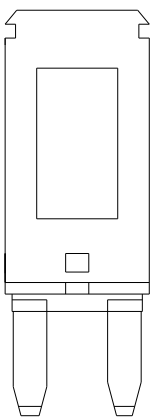
**Operating Temperature Rating :** -40°F(-40°C) to 180°F(85°C).

**Storage Temperature Rating :** -40°F(-40°C) to 260°F(125°C).

**Termination :** Compatible with 280 Type fuse blocks using 0.32in (8.1mm) centering spacing.

**Compliances :** SAE J553 Type I and Type III Circuit Breakers.

#### DIMENSIONS (mm)



**CB930-1(Type I)**

**CB930-2(Type II)**  
**(12V or 24V)**

**CB930-3(Type III)**

#### BODY COLOY

AMP RATING	COVER COLOR
5	TAN
7.5	BROWN
10	RED
15	BLUE
20	YELLOW
25	WHITE
30	GREEN

#### TRIP TIME VS. PERCENT OF RATED CURRENT

